

Name:
Class:
Date:

IMPACT NOW 1
Week 7
U3 WS2

A) READING

A. Read, find and answer.

1. Is the city, Lucca, a small town?
2. Is the supermarket opposite the police station?
3. Is Jason's father a doctor?



Hi, my name is Jason. I live in Lucca in Italy. I love it because it's a small town. I study at a school next to the park. After school, I go to the park with my friends. Later, I buy a magazine and I read my magazine in a café. I usually have a cola while reading my magazine. I come back home around 5p.m. My parents arrive after me. After work, my mum goes to the supermarket opposite her office. It's a big supermarket. You can find everything there. My dad is a doctor and the hospital is behind the police station in the city centre. After having dinner, we sometimes play board games. At the weekends, we often visit relatives, who live near the bank or we sometimes go to the theatre in front of my school.

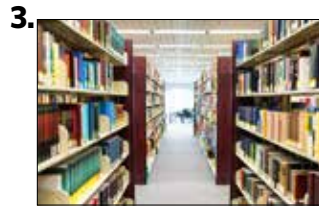
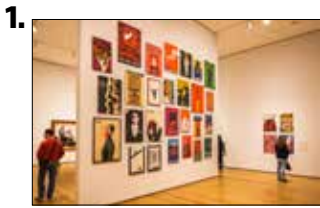


B. Read the text again and write "True" or "False".

1. Jason lives in Lucca, Italy.
2. Lucca is a very big city.
3. Jason's school is opposite the park.
4. Jason reads a magazine at school.
5. Jason usually drinks orange juice in a café.
6. Jason comes home around 6 p.m.
7. Jason's parents come home after Jason.
8. Jason's mum goes to the supermarket before work.
9. The hospital is in front of the police station.
10. Jason's relatives live near the bank.

B) VOCABULARY

A. Look at the photos and match the photos with a correct word.



- a. a mosque (.....)
- b. a library (.....)
- c. a museum (.....)
- d. a clothes shop (.....)
- e. a theatre (.....)
- f. a chemist's (.....)
- g. a train station (.....)
- h. a church (.....)
- i. an art gallery (.....)

B. Read the definitions and match the words (a-g) to the correct definitions (1-7).

- a) a supermarket
- b) a post office
- c) a book shop
- d) a hospital
- e) newsagent's
- f) a train station
- g) a car park

1. A place where stamps are sold and where letters and parcels are sent. (.....)
2. A place where you can leave your car. (.....)
3. A large shop which sells most types of food and other goods needed in the home. (.....)
4. A place with one or more buildings and platforms where trains stop for people to get on or off. (.....)
5. A place where people who are ill or injured are treated and taken care of by doctors and nurses. (.....)
6. A shop where books are sold. (.....)
7. A shop where newspapers and magazines are sold. (.....)

C) USE OF ENGLISH

A. Write the correct preposition under each picture.

in - behind - under - next to - near - in front of - between - opposite - on



B. Look at the pictures and complete the sentences.



1. The car is the house.



2. The woman is the man.



3. The man is standing the trees.



4. The cat is the curtain.

D) WRITING

Look at the map and answer the questions.



Turn left



Turn right



Go straight on



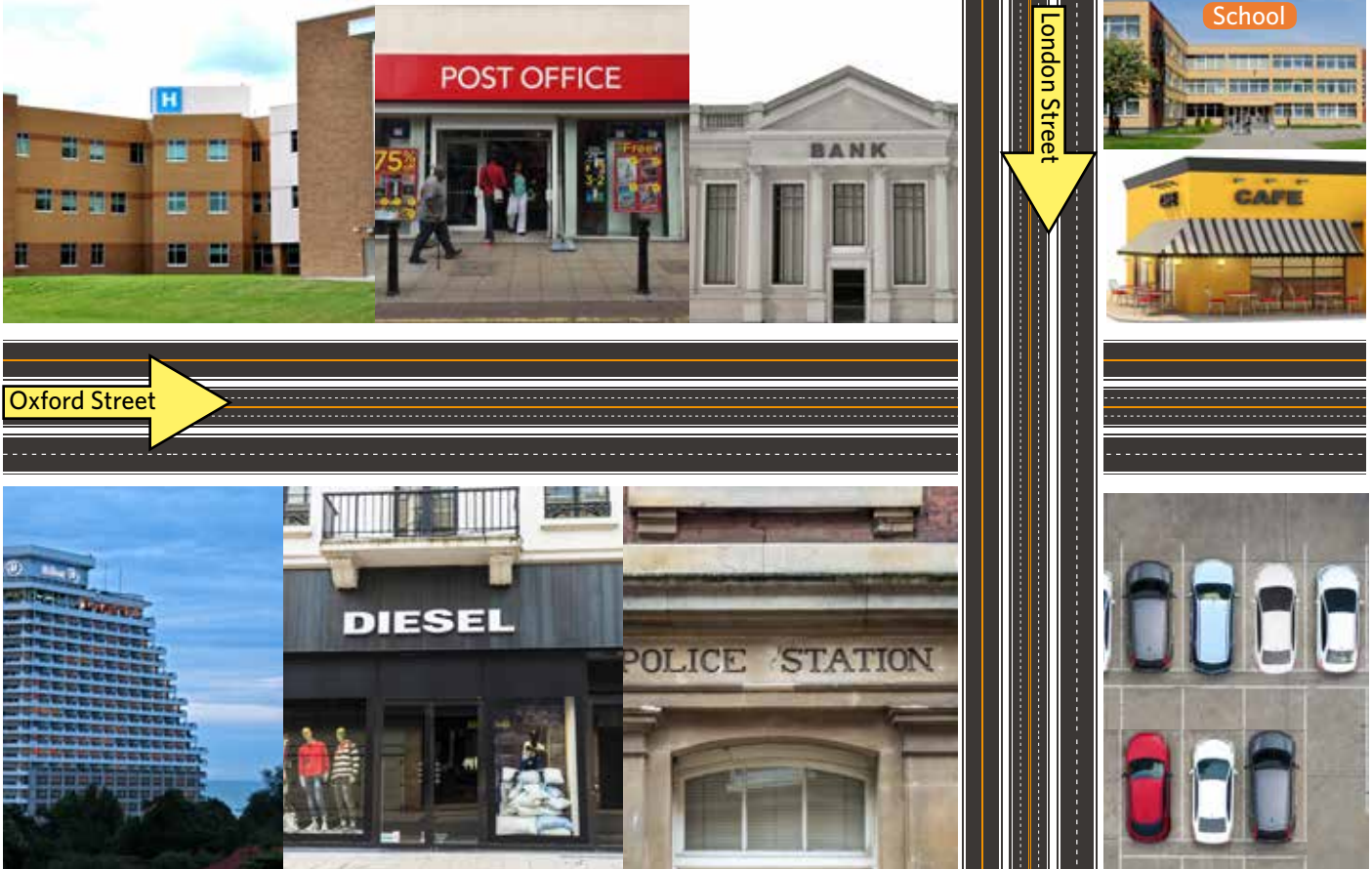
Cross the road



On the corner



Go past the bank



1. I am in front of hospital. How can I go to the school?

.....

2. I am near the cafe. How can I go to the hotel?

.....

3. I am in the car park. How can I go to the post office?

.....

4. I am in the clothes shop. How can I go to the cafe?

.....